



DC Zoned Building Space

— For Lease —



100 Everett Street, City of Belleville

4,655 sq. ft., Single Tenant Space



← Location Highlights

1.5 hour east of Toronto

Excellent proximity to Highway 401

More than 47 million people live within 500 kilometres (310 miles) of the Bay of Quinte and more than half of North America's industrial markets are within a day's truck run.

Population 236,000 (Greater Bay of Quinte Region)

The area includes a wide range of multi-national distribution and manufacturing companies, including FedEx, Procter & Gamble, WK Kellogg Co, Magna International, JBS Foods and Amazon.



BAY OF QUINTE
ECONOMIC DEVELOPMENT

Discover the Bay of Quinte advantage
at QuinteDevelopment.com or email
Chris at chris@quintedevelopment.com



Property Overview

Building and Land

Building Size: 4,655 sq. ft.
Lot Frontage: 64' 8" Depth: 104'
Zoned: DC

Workshop Area

Clear Ceiling: 13' and 10' in the back bay area
Overhead Door: 1, 9' x 12' roll-up
Flooring: new concrete floor with in-floor drains and oil separator
Lighting: LED
Other: exhaust system, washer hookup, waterproof walls

Utilities

Water: Municipal
Electricity: Exlexicon

Highlights

- Front waiting area and open office area
- 2 piece washroom
- Fully air conditioned, spray foam insulated



Lease Information

\$3,500/monthly
Annual Property Taxes: \$9,831
Tenant responsible for paying their own utilities and TMI

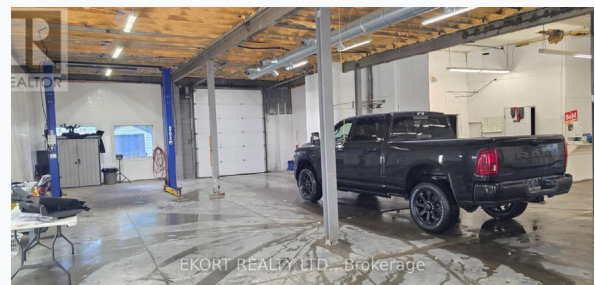
- Included in the rent is a security system, a hoist and an air compressor

Community Contact

Chris King, Chief Executive Officer
Quinte Economic Development Commission
Tel: (613) 961-7990
Email: chris@quintedevelopment.com

Property Contact

Jamie Troke, Broker of Record
Ekort Realty Ltd.
Tel: (613) 967-7208
Email: jamie@ekortrealty.com



BAY OF QUINTE
ECONOMIC DEVELOPMENT

Discover the Bay of Quinte advantage
at QuinteDevelopment.com or email
Chris at chris@quintedevelopment.com