

INDUSTRIAL LAND FOR SALE

20.7 Acres: \$2,999,000

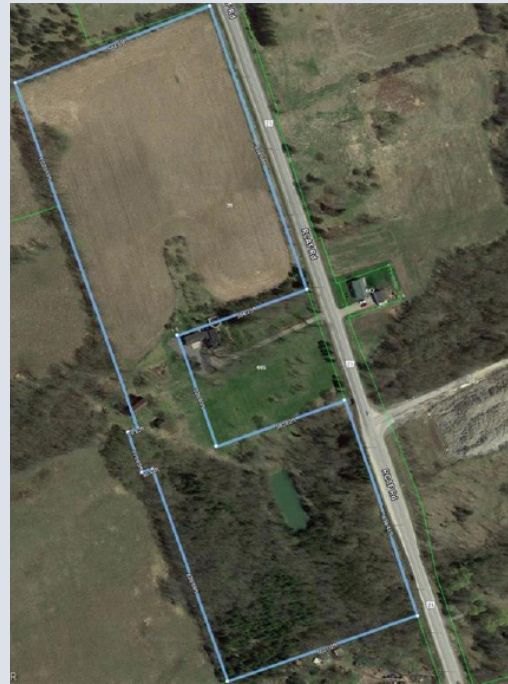
\$18/sf: Minimum Building
Size 5,000 sf

LOCATION



OWNERS REPRESENTATIVE

Tom McEvoy, Salesperson
Century 21 Lanthorn Real Estate
Tel: 613-967-2100
Email: tom.mcevoy@century21.ca



GROW YOUR BUSINESS **HERE**

PROPERTY DETAILS

Site Name: 461 RCAF Road
Size: 20.7 acres
Location: RCAF Road - Access to the property is from RCAF Road which is on a designated unrestricted loads route. Site is Adjacent to the North Murray Industrial Park.

HWY Access: HWY 401
Distance to HWY: 2.5km
Natural Gas: Enbridge Gas
Electricity: Hydro One
Three phase power available
Water/Sewage: Municipal

COMMUNITY CONTACT

Chris King, CEO
Quinte Economic Development Commission
Tel: 613.96.7990 / 1.866.961.7990
Email: chris@quintedevelopment.com

WWW.QUINTEDEVELOPMENT.COM

